

How to Capture and Deploy an Image to the WDS

Note: this assumes you configure the BIOS on your computer to be able to PXE Boot.

1. Configure computer you want to capture and sysprep it. To sysprep go to c:\Windows\System32\Sysprep and double-click sysprep. Exe Check mark Generalize and select Shutdown when done.

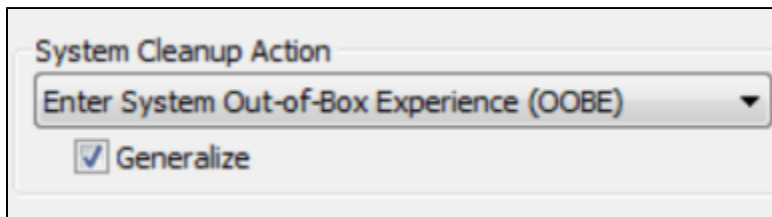


Figure 1: System Cleanup Action dropdown

2. Reboot machine and quickly click F12 until you see the menu below. Select capture or setup plus your OS type.

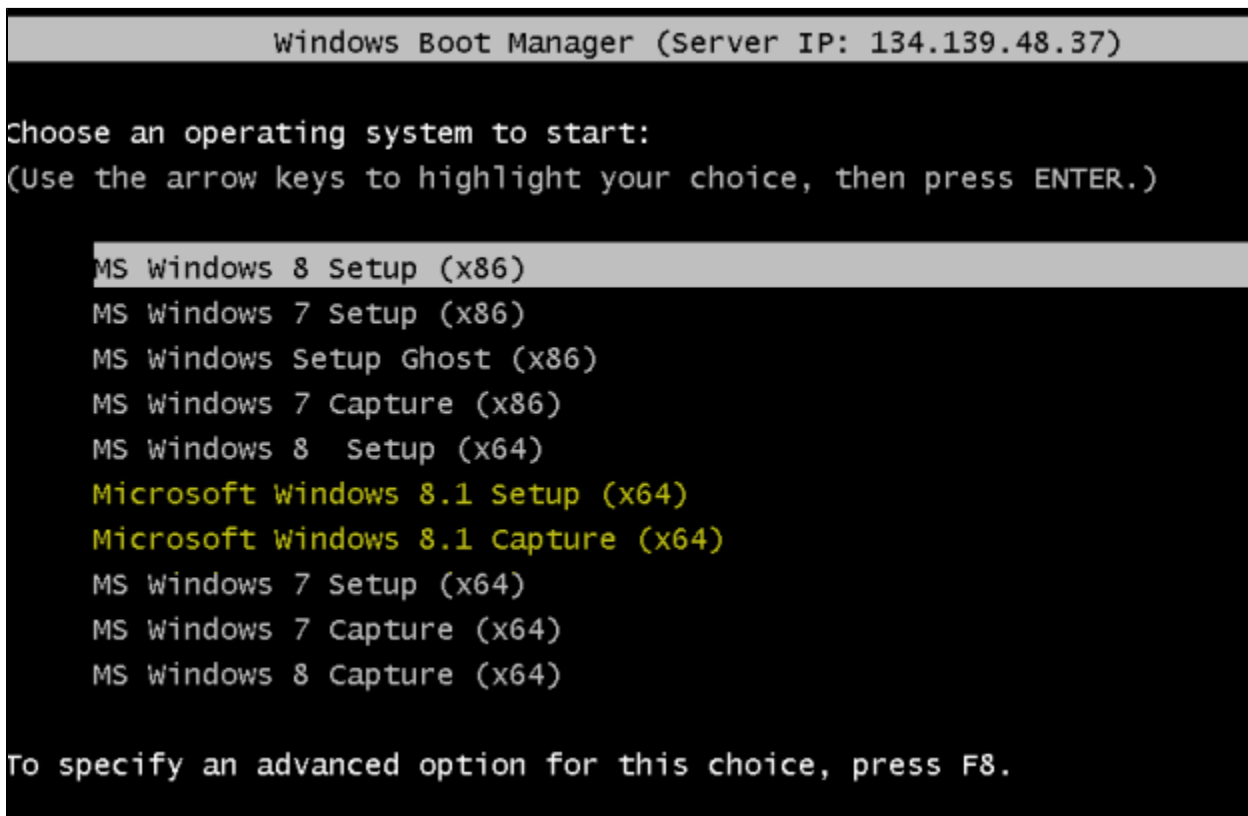


Figure 2: Windows Boot Manager screen

3. Click Next

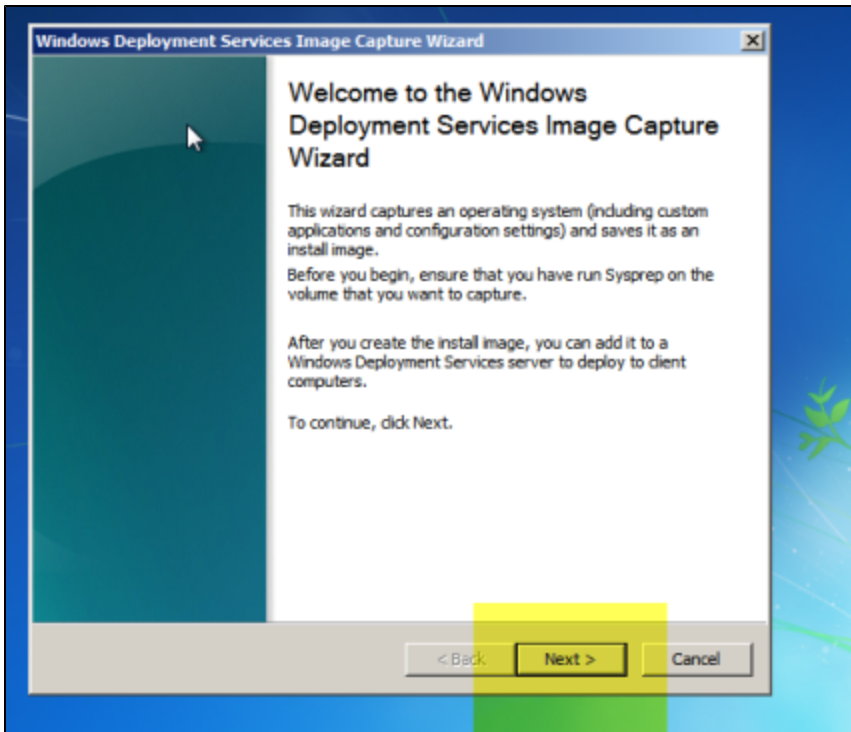


Figure 3: Windows Deployment Services Image Capture screen

4. Give it a name

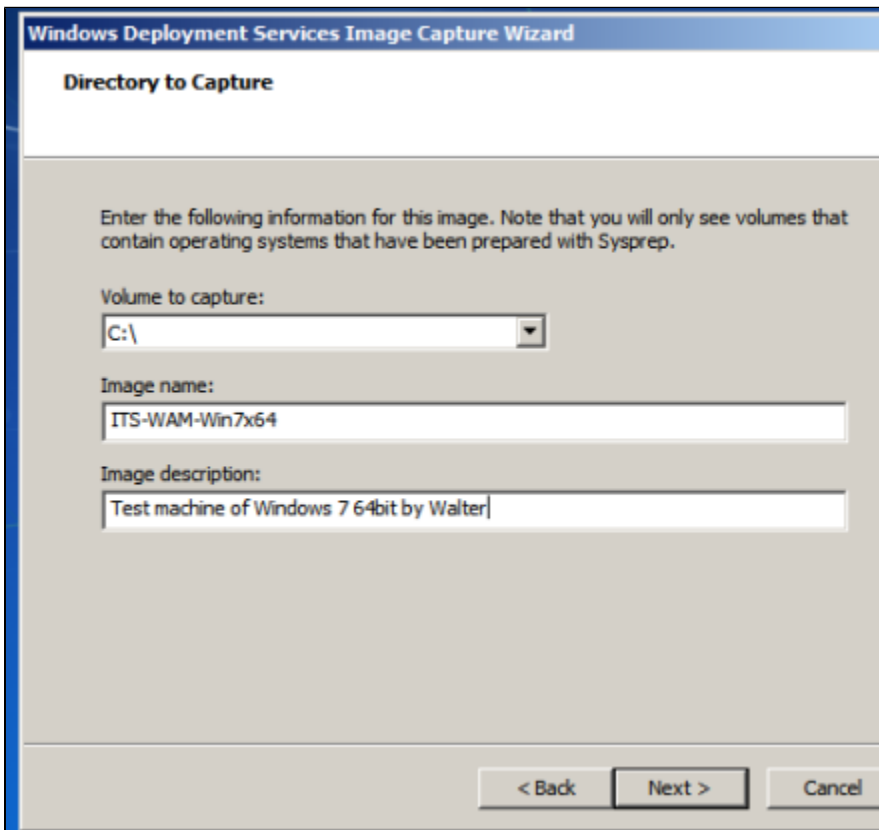


Figure 4: Windows Deployment Services Image Capture – Directory to Capture screen

5. Type name of server and click Connect.

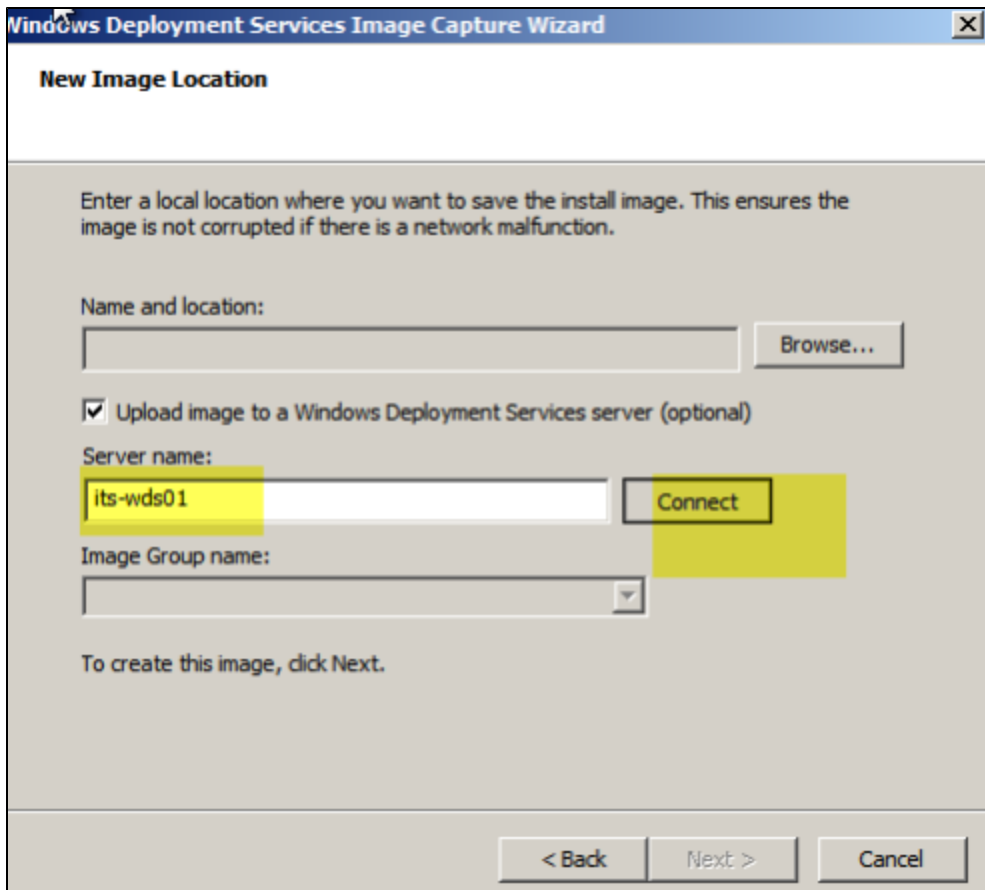


Figure 5: Windows Deployment Services Image Capture – New Image Location screen

6. Type admin account and password (see format for user)

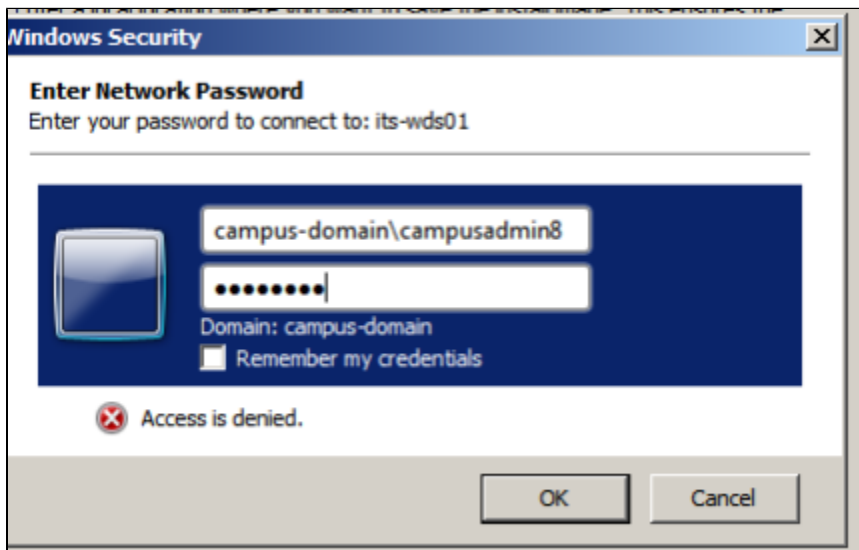


Figure 6: Windows Security Password screen

7. Select the area you have permission to put the image to.

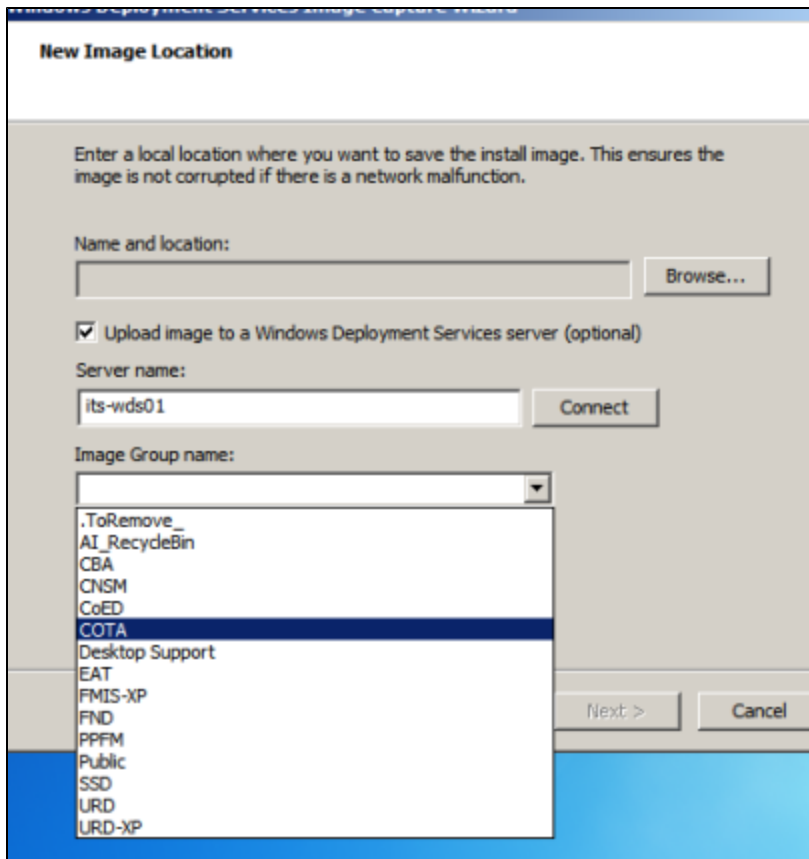


Figure 7: New Image Location screen

8. Hold Shift+F10 and a command prompt will appear. Type `net use h: {*}\\134.139.48.37\dgs* (file:///\\134.139.48.37\dgs)` or whatever your area is cba, fn, etc.

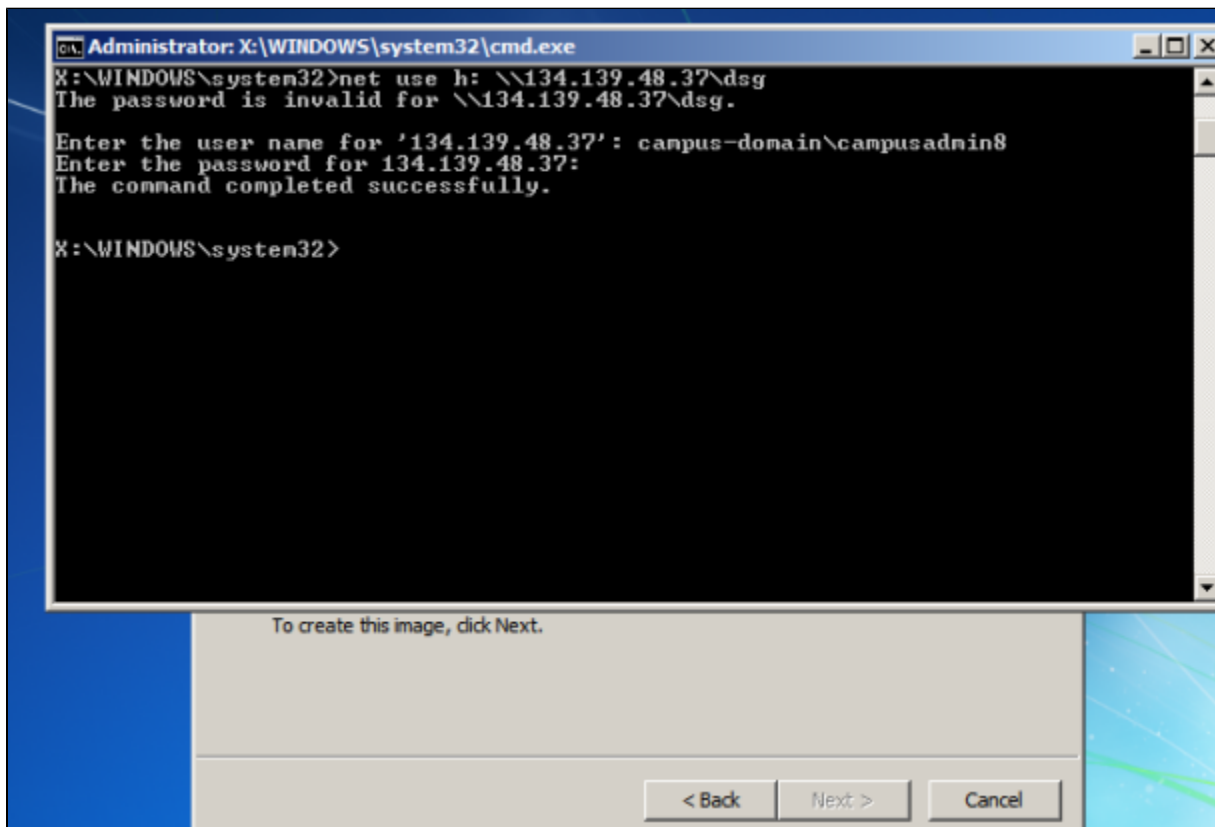


Figure 8: Administrator screen

9. Check mark Upload Image to WDS server and click browse and select H: drive and give it a name. The share that you are mapping is a temporary scratch disk that is used instead of using an external harddrive. If you prefer to continue using an external harddrive then do not use this shared resource. Files in this scratchdisk will be deleted every month as they are not needed because the server uploads a copy to the right location automatically. Click Next and wait.

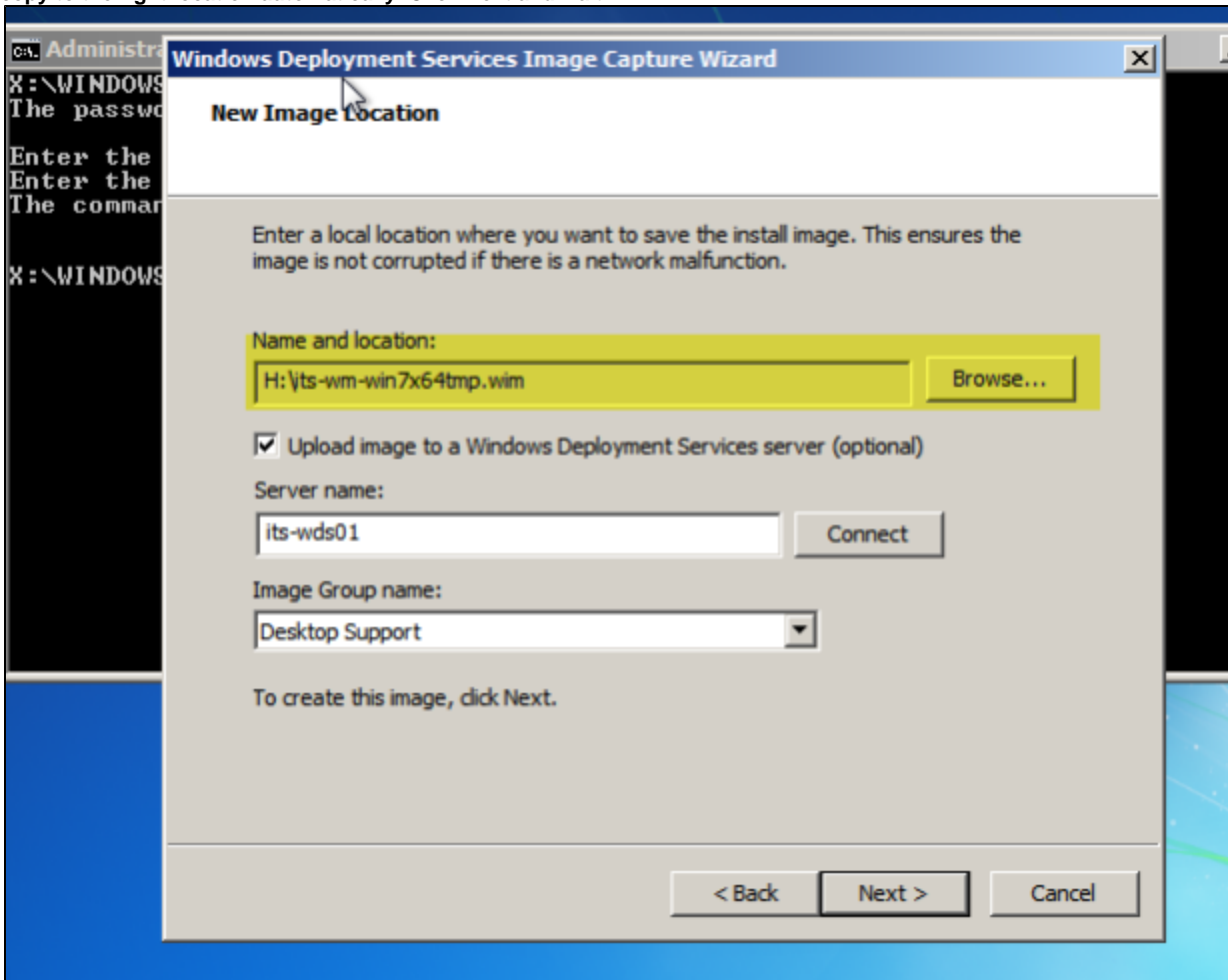


Figure 9: Windows Deployment Services Image Capture Wizard screen

10. Once completed, click Finish

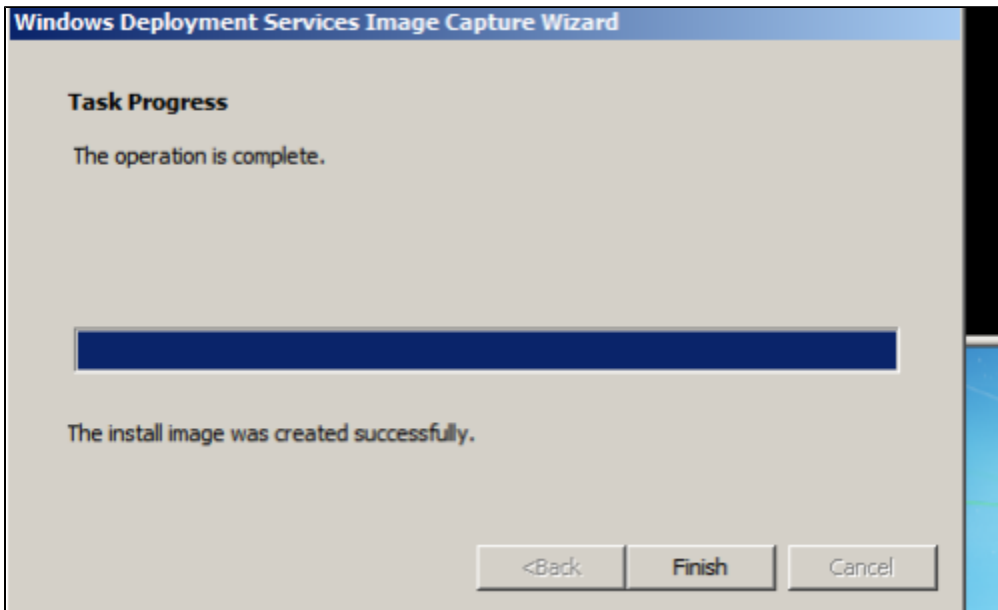


Figure10: Windows Deployment Services Image Capture Wizard screen

How to deploy an image

1. **Make sure you enable PXE in the computer BIOS first. Boot up a machine and hit F12 repeatedly until you see the following menu:**

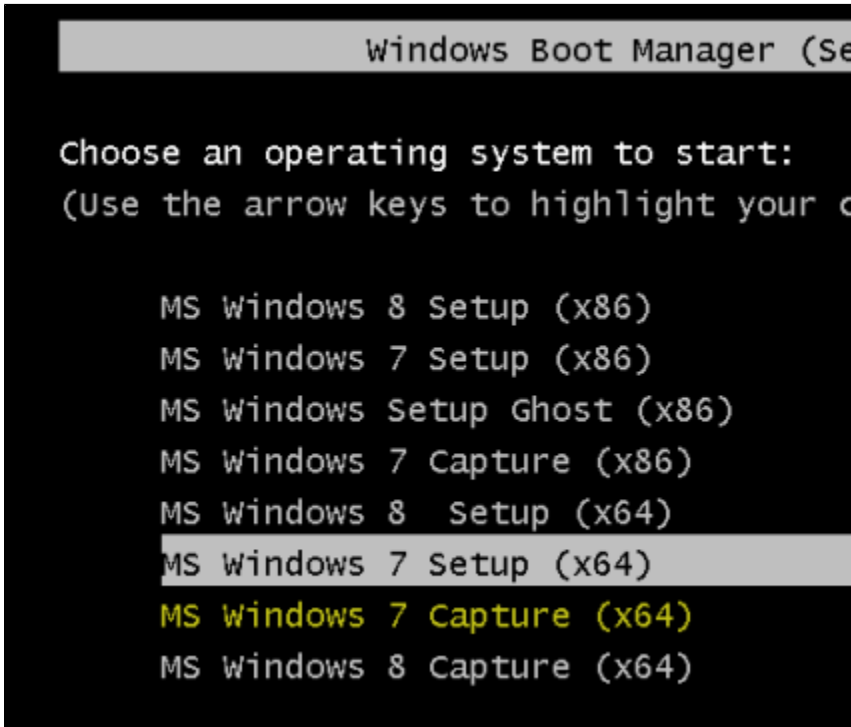


Figure 11: Windows Boot Manager screen

2. **Select what you want to setup from the menu and press Enter. Click Next.**

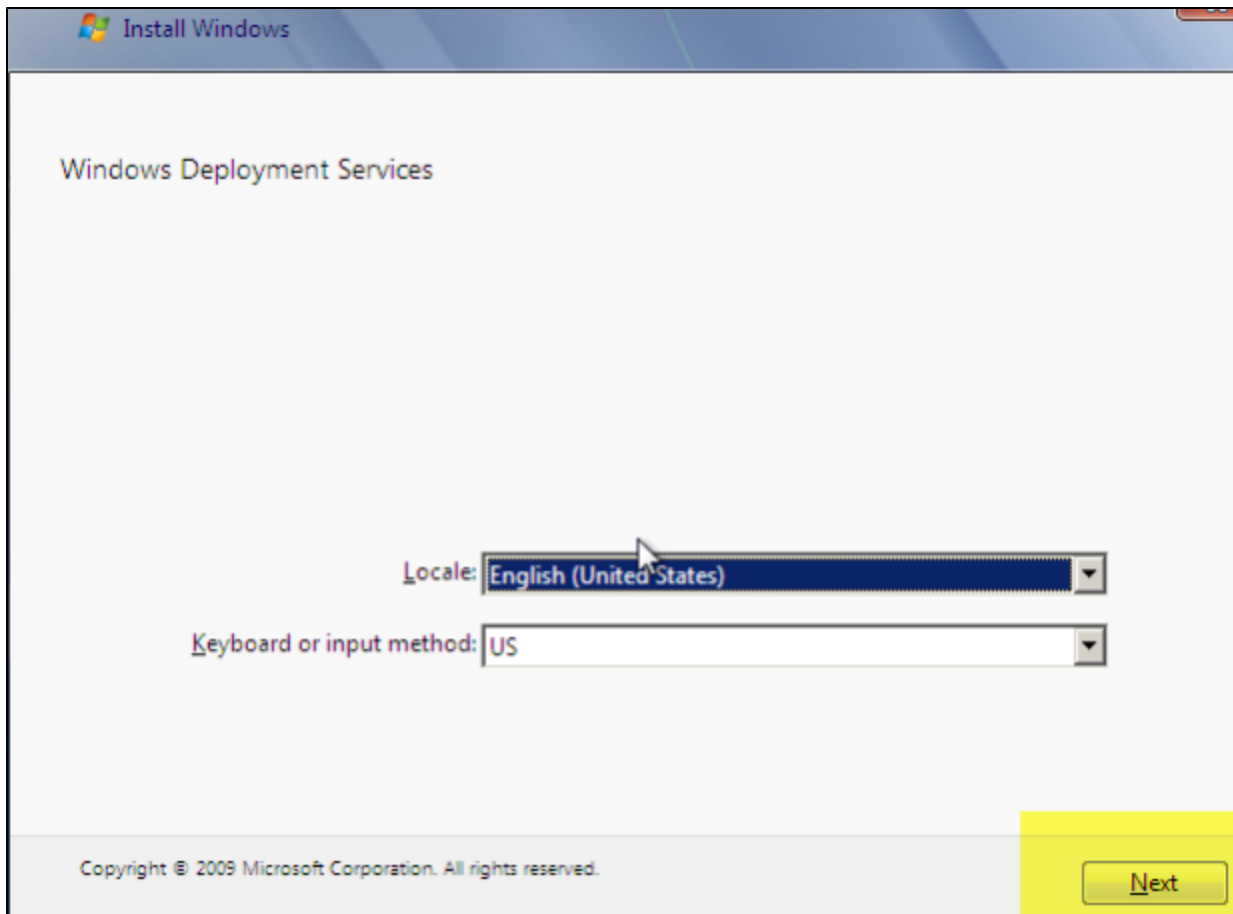


Figure 12: Windows Deployment Services screen

3. Enter Credentials

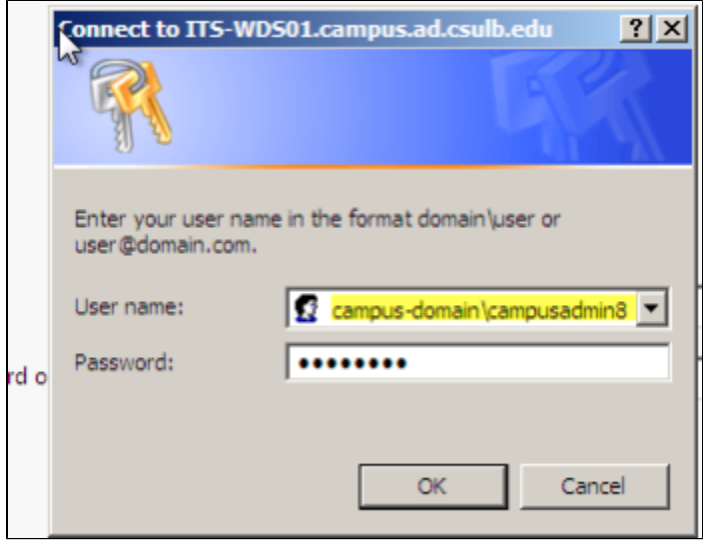


Figure 13: Windows Deployment password screen

4. Select from your image collection and click Next

Operating system	Language	Architecture	Date modified
206_Jan_24_2012	en-US	x64	1/24/2012
Win7_64_206_Final	en-US	x64	8/29/2011
athl-7x64basic	en-US	x64	8/8/2013
DAF hp - win 7-64	en-US	x64	9/7/2012
dc7900-x64-base	en-US	x64	12/14/2012
wds 7x64	en-US	x64	6/12/2014
ir-z420x64	en-US	x64	6/14/2013
ir-z420	en-US	x64	5/6/2013
its-z420basic-x64	en-US	x64	8/20/2013

Description:

Figure 14: Operating System selection screen

5. Click Next

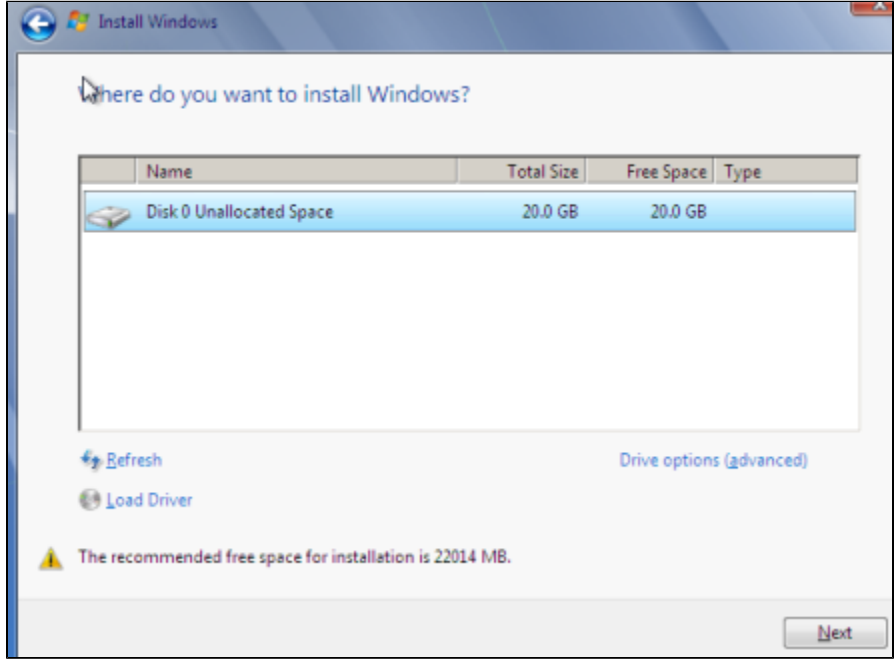


Figure 15: Install Windows selection screen

6. Wait until it finishes and you are done.

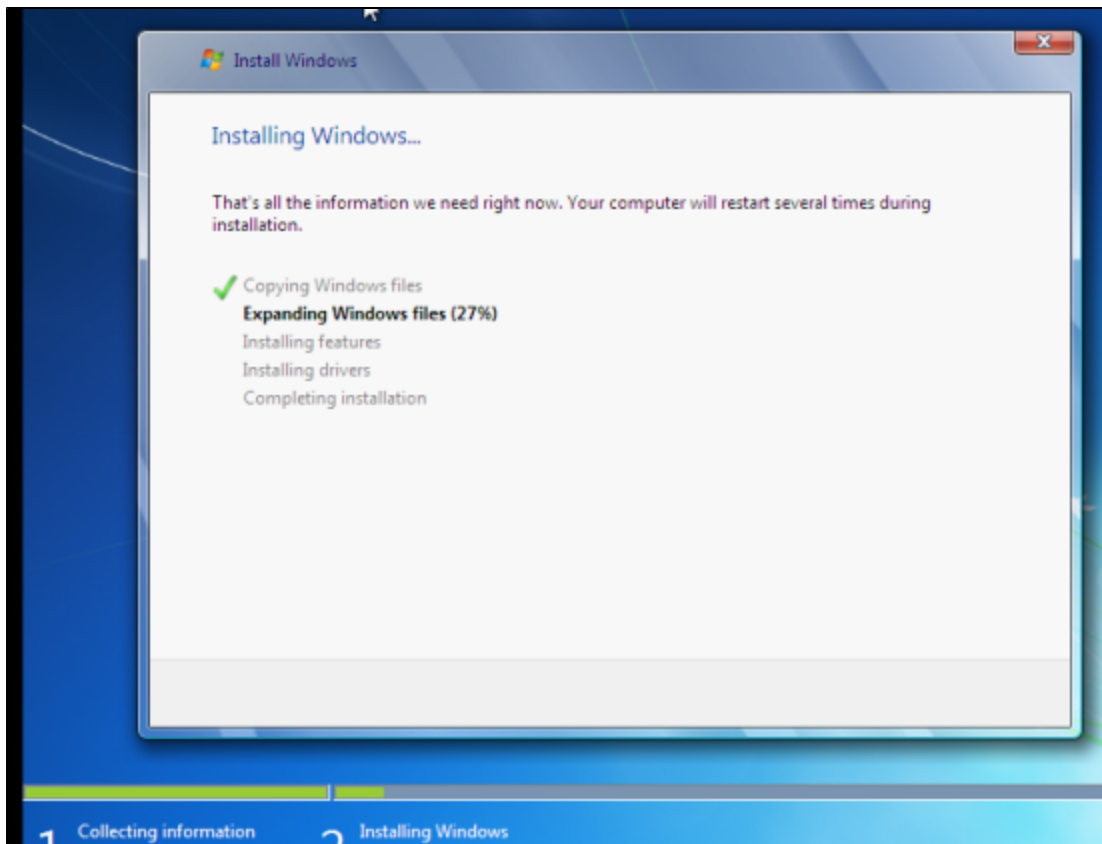


Figure 16: Install Windows completion screen